

Facilities List

Updated 04/08/2009

I-Corp, Inc. is a technologically advanced, 58,000 square ft. machining and repair facility located on a nine-acre site in Beaumont, Texas. Twenty thousand square feet is climate controlled and dedicated to precision machining. The remainder is dedicated to industrial repair such as pumps, gearboxes and compressors, general machining, Field Machining and fabricating. **I-Corp, Inc.**'s pioneering efforts in quality assurance and shop floor control have won national recognition in publications such as *American Machinist*, *Iron Age*, and *Modern Machine Shop*. Below is a short synopsis of our basic capabilities followed by a complete facilities list.

BASIC CAPABILITIES

- TURN:** ¼" to 70" Diameter – Length over Bedway through 13' 4"
- MILL:** All types. Weights to 20,000 lbs.
- SAW:** Production Saw -- Maximum Diameter 18"
- DRILL:** .040" to 4" Radial Throat Depth 60"
- GRINDING:** Surface -- 12" x 24" x 14"
O.D. -- 8" x 36"
- KEYWAYS:** Any Width -- Length
- WELDING:** MIG, TIG, Arc, Gas
- FIELD MACHINING:** Milling, Boring, Flange Facing, Keyways, Pipe Part off & Beveling, Laser Alignment/Measurement/Leveling
- MISC:** Balancing



4935 Fannett Road, Beaumont, TX 77705
Phone: 409-842-9765 Toll Free: 800-324-4267
Fax: 409-842-0190

WWW.ICORPTX.COM

Basic Equipment

Turning:

- 8 CNC Lathes
- 15 Manual Lathes
- 3 Turret Lathes
- 3 VTL's

Milling:

- 4 CNC Vertical Mills
- 1 CNC Horizontal Mills
- 11 Manual Vertical Mills
- 6 Manual Horizontal Mills



Drilling:

- 2 Radial Arm Drills

Saws:

- 3 Saws with Bar Feed
- 1 Vertical Band Saw



Welding:

- 13 GMAW
- 8 SMAW
- 3 GTAW (TIG)
- 3 Plasma Cutting
- 1 Iron Worker

Field Machining:

- 2 Line Boring
- 2 Milling
- 2 Flange Facers
- 1 Laser Alignment/Leveling



QUALITY CONTROL

Our Quality Assurance program is designed to meet the requirements of ISO-9002.



4935 Fannett Road, Beaumont, TX 77705



Coming from Houston down I-10:

Exit Walden Road and turn right
Take a left at 1st stoplight (Fannett Road)
I-Corp is approx. ½ mile on right.

Coming From Beaumont down I-10:

Exit Walden Road & turn left under I-10.
Take a left at 1st stoplight (Fannett Road)
I-Corp is approx. ½ mile on right.

Coming From Port Arthur down 69/96/287:

Exit Fannett Road & take a left under highway.
I-Corp will be approx. ¾ mile on left.





TURNING, CNC:

(1) MORI SEIKI SL-65B CNC Lathe With Fanuc 0T Control

Maximum Swing	27.5"
Maximum Longitudinal Travel	33.8"
Power To Spindle	50 HP DC
Hole Through Spindle	6.3"
Maximum Spindle Speed	1050 RPM
20" SMW Power Chuck	

(2) MORI SEIKI SL-35B CNC Lathe With Fanuc 0T Control

Maximum Swing	23.6"
Maximum Longitudinal Travel	30.7"
Power To Spindle	30 HP DC
Hole Through Spindle	3.6"
Maximum Spindle Speed	2500 RPM

(3) FEMCO HL-55 CNC Lathe With Fanuc OT-C Control

Maximum Swing	24.4"
Maximum Longitudinal Travel	31.4"
Power to Spindle	40 HP
Hole Through Spindle	3.06"
Maximum Spindle Speed	2500 RPM

(4) FEMCO WNC-35 Lathe With Fanuc OT Control

Maximum Swing	24.4"
Maximum Longitudinal Travel	29.13"
Power to Spindle	30 HP
Hole through Spindle	3.62"
Maximum Spindle Speed	2500 RPM



(5) **WACHEON HI-ECO 35 CNC Lathe With Fanuc OT Controller**

Maximum Swing	25"
Maximum Longitudinal Travel	26"
Power to Spindle	25 HP
Hole through Spindle	3.48"
Maximum Spindle Speed	2500 RPM

(6) **HWACHEON HI-ECO 31A CNC Lathe With Fanuc OT Controller**

Maximum Swing	20.5"
Maximum Longitudinal Travel	23.6"
Power to Spindle	20 HP
Hole through Spindle	3.03"
Maximum Spindle Speed	3200 RPM

(7) **KINGSTON CL-38AT-1500 CNC Lathe With Fanuc 20-T Controller**

Swing Over Bedways	26"
Swing Over Cross Slide	14.5"
Maximum Longitudinal Travel	55"
Power to Spindle	20 HP
Hole Through Spindle	4 1/8"
Maximum Spindle Speed	2000 RPM

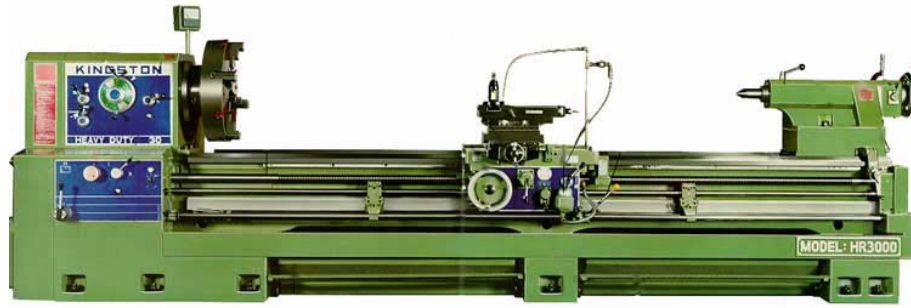
(8) **FEMTEC FL-75/120D CNC Lathe With Fanuc 18T-C Controller**

Maximum Swing	35"
Maximum Longitudinal Travel	100.8"
Power to Spindle	50 HP
Hole Through Spindle	8.05"
Maximum Spindle Speed	750 RPM

(9) **HYUNDAI HIT-18S**

Maximum Swing	10.5"
Maximum Longitudinal Travel	18"
Power to Spindle	14 HP
Hole Through Spindle	2.84"
Maximum Spindle Speed	3600 RPM





TURNING, GENERAL:

(1) **TAKISAWA TSL-D Engine Lathe**

Swing Over Bedways	14 1/8"
Swing Over Cross Slide	8 1/4"
Maximum Longitudinal Travel	40"
Power To Spindle	5 HP
Hole Through Spindle	1 3/8"
Maximum Spindle Speed	1800 RPM

(2) **DAEWOO A-20 PRECISION Engine Lathe With Digital Readout in X, Travel Dial in Z (4 Machines Available)**

Swing Over Bedways	20"
Swing Over Cross Slide	11 3/8"
Maximum Longitudinal Travel	60"
Power To Spindle	10 HP
Hole Through Spindle	3"
Maximum Spindle Speed	2000 RPM

(3) **POLAMCO Engine Lathe With Digital Readout in X & Travel Dial in Z**

Swing Over Bedways	24 1/2"
Swing Over Cross Slide	14 1/2"
Maximum Longitudinal Travel	80"
Power To Spindle	15 HP
Hole Through Spindle	2 3/4"
Maximum Spindle Speed	1800 RPM

(4) **BULLARD DYNATROL 46" Vertical Turret Lathe (VTL) With D.R.O.**

Maximum Swing Side Head Working/Not Working	50" / 58"
Height Under Rail	52"
Chuck Size	46"
Power To Spindle	60 HP



(5) **BULLARD DYNATROL 46" Vertical Turret Lathe (VTL) With D.R.O.**

Maximum Swing Side Head Working/Not Working	50" / 58"
Height Under Rail	40"
Chuck Size	46"
Power To Spindle	75 HP

(6) **BULLARD 56" Vertical Turret Lathe (VTL) With D.R.O.**

Maximum Swing Side Head Working / Not Working	66" / 70"
Height Under Rail	48"
Chuck Size	56"
Power To Spindle	75 HP

(7) **WARNER & SWASEY 4A-M-3550 Turret Lathe**

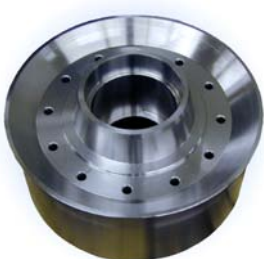
Chuck Size	24"
Swing Over Bedways	28"
Swing Over Cross Slide	22½"
Spindle To Turret	80"
Power To Spindle	75 HP
Hole Through Spindle	9¼"
Spindle Speeds	10-526 RPM

(8) **WARNER & SWASEY #3 Turret Lathe**

Chuck Size	8"
Swing Over Bedways	15 3/8"
Swing Over Cross Slide	7"
Spindle To Turret	24"
Power To Spindle	10 HP
Hole Through Spindle	1 3/4"
Spindle Speeds	45-2262 RPM

(9) **KINGSTON HR 4000 Engine Lathe**

Swing Over Bedways	34"
Swing Over Cross Slide	25"
Maximum Longitudinal Travel	13' 4"
Power To Spindle	20 HP
Hole Through Spindle	4 1/16"
Maximum Spindle Speed	800 RPM



(10) **KINGSTON HD2260 Engine Lathe (3 Machines Available)**

Swing over Bedways	22"
Swing over Cross Slide	13 3/8"
Maximum Longitudinal Travel	60"
Power to Spindle	10 HP
Hole through Spindle	4"
Maximum Spindle Speed	1200 RPM

(11) **KINGSTON HR 3000 Engine Lathe**

Swing over Bedways	34"
Swing over Cross Slide	25"
Maximum Longitudinal Travel	9' 10"
Power to Spindle	20 HP
Hole through Spindle	4 1/16"
Maximum Spindle Speed	1200 RPM

(12) **VICTOR CH-430 Model 1740T Engine Lathe (3 Machines Available)**

Swing over Bedways	17"
Swing over Cross Slide	9 5/8"
Maximum Longitudinal Travel	40"
Power to Spindle	5 HP
Hole through Spindle	2.312"
Maximum Spindle Speed	1800 RPM

(13) **UNIVERSAL Turret Lathe**

Chuck	32"
Swing over Bedways	36"
Swing Over Cross Slide	29"
Power To Spindle	50 HP
Hole Through Spindle	10"
Spindle Speeds	20 RPM-530 RPM

(14) **BIRMINGHAM Engine Lathe Model DL 40120**

Swing over Bedways	40"
Swing Over Cross Slide	28"
Maximum Longitudinal Travel	120"
Power To Spindle	20 HP
Hole Through Spindle	5.25"
Maximum Spindle Speeds	1000 RPM





MILLING, CNC:

- (1) **FEMCO MC-1400 CNC Machining Center with Fanuc 0MB Control
Automatic 30 Position Tool Changer; Spindle Refrigeration, Rigid Tapping**

Table Size	26 x 67
Table Longitudinal Travel	55.1"
Table Cross Travel	27.6"
Vertical Travel	27.6"
Spindle Nose to Table	35.4"
Maximum Table Weight	4400 LB
Main Motor	20 HP

- (2) **FEMTEC FV-60 CNC Machining Center with Fanuc 0MB Control
Automatic 30 Position Tool Changer; Spindle Refrigeration, Rigid Tapping**

Table Size	68"x 25½"
Table Longitudinal Travel	59"
Table Cross Travel	30"
Vertical Travel	27.6"
Spindle Nose to Table	35.4"
Maximum Table Weight	4400 LB
Main Motor	20 HP



(3) **KAO MING KMC-1500V CNC Machining Center with Fanuc 18M Control**

Table Size	67" x 31"
Table Longitudinal Travel	60"
Table Cross Travel	33.25"
Vertical Travel	31.5"
Spindle Nose to Table	39"
Maximum Table Weight	4840 LBS
Main Motor	20 HP

(4) **FEMCO BMC-10R CNC Horizontal Machining Center with Fanuc 18M 5-Axis Controls (4 simultaneous); Spindle Refrigeration; Rigid Tapping**

Table Size	44.1" x 49.2"
Table Longitudinal Travel	47.2"
Table Cross Travel	55"
Vertical Travel	47.23"
Spindle Stroke	27.6"
Maximum Table Weight	8818 LBS
Main Motor	25 HP
Spindle Size	4.33"

(5) **KAFO VMC – 15800 - Year 2005**

Table Size	75" x 30"
Table Longitudinal Travel	59"
Table Cross Travel	31"
Vertical Travel	32"
Spindle Nose to Table	35"
Maximum Table Weight	4400 LBS
Main Motor	20 HP





MILLING, VERTICAL:

- (1) **HECKERT FSS 450/E Vertical Mill (Equipped With Bausch & Lomb Digital Readout In X, Y and Z Axes)**

Table Size	18" x 70"
Table Longitudinal Travel	52"
Table Cross Travel	14"
Vertical Travel of Knee	24.75"
Maximum Table Weight	3300 LBS
Main Motor	20 HP

- (2) **TUDA VERTICAL BED TYPE MILL (Equipped With Bausch & Lomb Digital Readout In X, Y and Z Axes)**

Table Size	15.7" x 63"
Table Longitudinal Travel	39.4"
Table Cross Travel	15.7"
Vertical Travel of Head	22"
Main Motor	20 HP

- (3) **PROMILL PM-2V Vertical Mill (Equipped with Sony Digital Readout in X and Y-Axes)**

Table Size	9" x 42"
Longitudinal Travel	26"
Table Cross Travel	12"
Vertical Travel	16"
Main Motor	3 HP

(4) **PROMILL PM-5V Vertical Mill (Equipped with Newell Digital Readout in X,Y, and Z Axes) (4 Machines Available)**

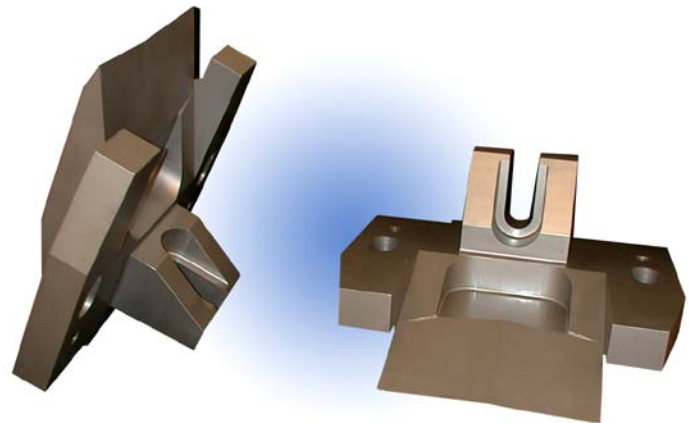
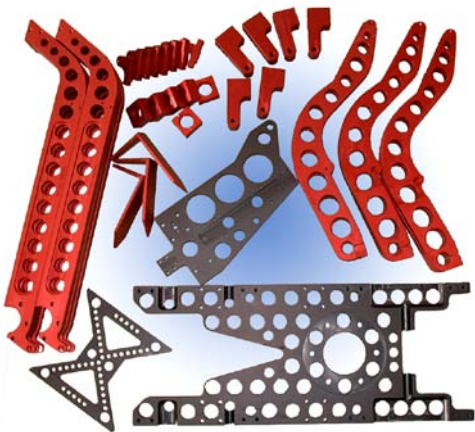
Table Size	10" x 54"
Table Longitudinal Travel	34 1/2"
Table Cross Travel	14 3/4"
Vertical Travel	16"
Main Motor	5 HP

(5) **SHARP MODEL KMA-2 Vertical Mill Equipped With Newell DP7 Digital Readout in X, Y, and Z Axes (3 Machines Available)**

Table Size	18" x 75"
Table Longitudinal Travel	47 1/4"
Table Cross Travel	17 11/16"
Vertical Travel of Knee	21 5/8"
Main Motor	15 HP

(6) **SHARP MODEL KMA-3 Year 2007**

Table Size	87" x 20"
Table Longitudinal Travel	59"
Table Cross Travel	24"
Vertical Travel of Knee	31.5"
Main Motor	20 HP





MILLING, HORIZONTAL:

(1) **UNION 3-1/8 Horizontal Boring Mill (Equipped With Bausch & Lomb Digital Readout In X, Y and Z Axes)**

Table Size (Complete Rotation W/Optics)	49" x 55½"
Table Cross Travel	63"
Head Stock Vertical Travel	39"
Maximum Table Weight	5500 LBS
Main Motor	10 HP

(2) **UNION 3-1/2" Horizontal Boring Mill (Equipped With Newell Digital Readout In X, Y and Z Axes)**

Table Size (Complete Rotation W/Optics)	44" x 39.37"
Table Cross Travel	39"
Head Stock Vertical Travel	39"
Maximum Table Weight	5000 LBS
Main Motor	15 HP

(3) **UNION 4" Horizontal Boring Mill (Equipped With Bausch & Lomb Digital Readout In X, Y and Z Axes)**

Table Size (Complete Rotation W/Optics)	49" x 55½"
Table Cross Travel	63"
Head Stock Vertical Travel	49"
Maximum Table Weight	6700 LBS
Main Motor	15 HP



(4) **SCHARMANN 5" MODEL WB125 Horizontal Boring Mill**

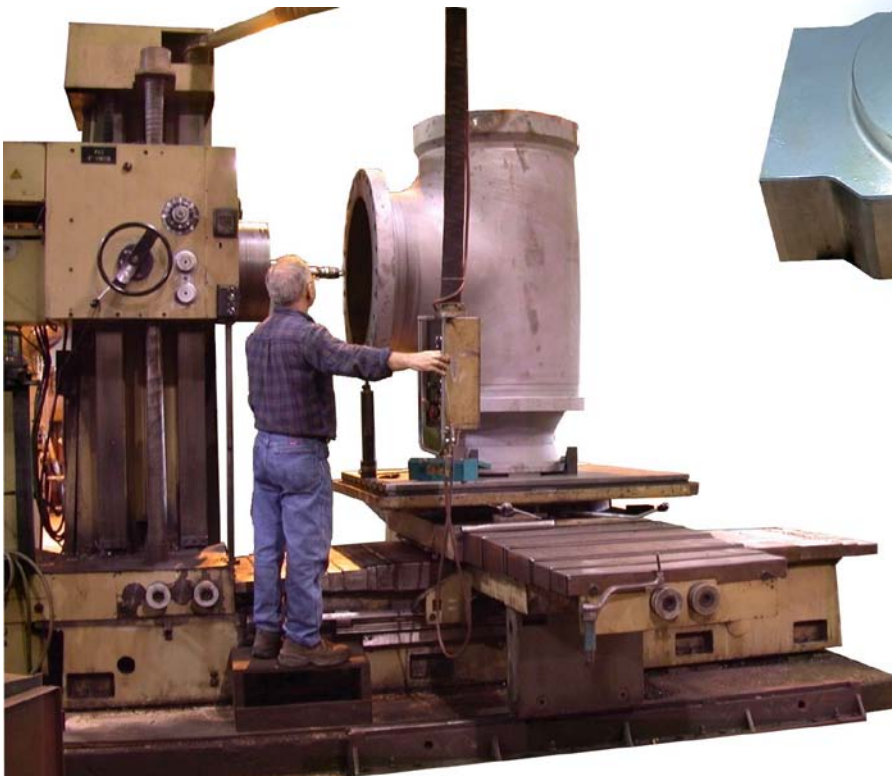
Table Size (Complete Rotation w/Optics)	98" x 98"
Table Cross Travel	83"
Head Stock Vertical Travel	69"
Maximum Table Weight	20,000 LBS
Main Motor	47 HP

(5) **HITACHI Horizontal Mill With Vertical Head (Equipped With Bausch & Lomb Digital Readout In X, Y and Z Axes)**

Table Size	63" x 14"
Table Longitudinal Travel	33.9"
Table Cross Travel	14"
Vertical Travel	19"
Main Motor	20 HP

(6) **ROOSKY with Sony Digital Readout**

Table Size	15 ¾" x 67"
Table Longitudinal Travel	40"
Table Cross Travel	16"
Vertical Travel of Knee	15"
Main Motor	15 HP





DRILLING:

(1) **IKEDA Radial Drill (2 Machines Available)**

Maximum Height Under Spindle	48"
Throat Depth	60"
Table Size	32" x 60"
Motor	7½ HP



SAWING:

(1) **AMADA HA-250 Horizontal Band Saw with Bar Feed**

Fully Automatic
10" Capacity

(2) **TOPTEC HL 400 Horizontal Band Saw with Bar Feed**

Fully Automatic
15" Capacity

(3) **JOHNSON AMADA H450 HD Horizontal Band Saw**

18" Capacity

(4) **Marvel Series 8 Mark II - Vertical Band Saw**

18" x 24"

WELDING CAPABILITIES:



MIG Welding (GMAW)

Miller Millermatic 250	3 machines available
Miller Millermatic 251	5 machines available
Miller Millermatic 252	4 machines available
Miller Deltaweld 451	1 machine available



ARC Welding (SMAW)

Miller SRH 333	1 machine available
Miller Dialarc 250	3 machines available
Miller Heliwelder	1 machine available
Miller Thunderbolt AC/DC	1 machine available
Miller Bobcat 250 Welder/Generator	1 machine available
Miller Bobcat 225 Welder/Generator	1 machine available



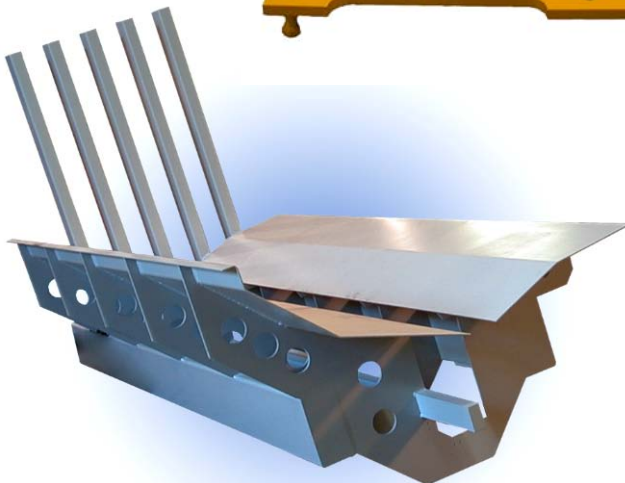
HeliArc / ARC (SMAW) / TIG (GTAW) Welding

Miller Syncrowave 250	2 machines available
Miller Syncrowave 350 LX	1 machine available



Plasma Cutting System

Hypertherm Powermax 1650	1 machine available
Miller Spectrum 750	1 machine available
ARC Gouger – SRH 503	1 machine available



FIELD MACHINING EQUIPMENT

PORTABLE BORING MACHINE

- (1) **Climax BB5000 Portable Boring Machine**
2006 year model, 2 machines available
For boring, spade drilling, facing and grooving
Boring Capacity 1 3/4" -24"
Length of Stroke 36"
Electric Motor 110 volt
Available boring bars: 1.5 DIA x 12' LG
2 1/4" DIA x 4', 6', 8', and 14' LG

PORTABLE MILLING MACHINE

- (2) **Climax KM4000 Portable Key mill Machine**
2005 year model, 1 machine available
Mills key ways, small windows and pockets
Requires only 8" of shaft for mounting
Mounts on shafts 4"-24" in diameter
Cuts up to 3.25" wide x 9.25" lg in one set up
Electric motor 110 volt
- (3) **Climax LM6000 Linear Milling Machine**
2008 year model, 1 machine available
Conventional milling, side milling or inverted milling
"X" Axis or Main bed travel length 96"
"Y" Axis or Ram Assembly travel length 24"
"Z" Axis or Spindle Assemble travel 4"
25 HP Electric Motor Drive Hydraulic Unit 480 volt
3 phase



PORTABLE FLANGE FACING MACHINE

- (4) **Climax FF3000 Portable Flange Facer**
2006 year model, 1 machine available
Facing, Beveling, Chamfering
Mounting diameter 1.5-6.75"
Flange Facing diameter 1.5-12.0"
Beveling diameter 2.0-7.0"
Feed rate 0-.025" rev
Pneumatic motor 90 psi
- (5) **Climax FF5000 Portable Flange Facer**
2008 year model, 1 machine available
Facing, Beveling, Chamfering I.D.
Mounting Diameter 5.0-18.0"
Flange Facing diameter 5.0-24.0"
Counter bore Machining Diameter 5.0-24.0"
Machining depth 1.97"
Radial Tool Feed 0-.03" rev
Vertical Tool Feed 0-.02" rev
Pneumatic motor 90 psi
- (6) **Easy-Laser D525 and D22 Spin Laser w/tripod**
2008 year model
Shaft Alignment and Measurements
Versatile for Coupling Alignments and for Geometrical Measurements
Measurement distance 66 ft
Temperature range 32-122degree
Relative humidity 10-95%
Max. display error +/-1%+1digit
Documentation of Measurements Live and PC Compatible
for documentation print out.



MISCELLANEOUS EQUIPMENT:



OKAMOTO SURFACE GRINDER

Maximum Width	12"
Maximum Length	24"
Maximum Height	14"

Automatic, Longitudinal, Cross and Vertical Feeds



GRISSETTI MODEL RT/A 800 HYDRAULIC TOOLROOM GRINDER

Maximum Diameter	8"
Maximum Length	36"



MORRISON KEYSEATER / PRATT WHITNEY VERTICAL SHAPER

Keyway Range (width)	1/16" to Any Width"
Maximum Length	Keyseater 9" / Shaper 12"
Maximum Part Size	25½" O.D. x 18" Lg"

STEWART-WARNER "HARD BEARING" BALANCER

Microprocessor With Plane Separation And Printout



Diameter Range Between Support Beams	1/2" to 41"
Max Rotor Diameter Beyond Bearings	79"
Length Between Support Beams	55"
Weight Range	5 to 2000 Lbs



PIRANHA MODEL P-50 IRON WORKER

Maximum Punch	13/16" through 3/4"
Maximum Plate Shear	5/8" X 14"
Maximum Angle Shear	5" X 5" X 3/8"
HP	10

BROWNE & SHARPE GLOBAL STATUS CMM

(Coordinate Measuring Machine)



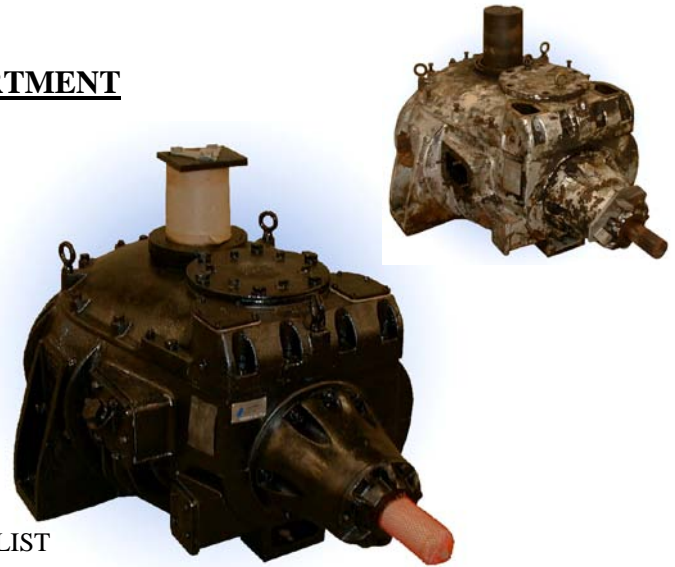
Probe Head	Renishaw Motorized
Software	PC-DMIS CAD Programming System
Table Size	28" x 40"
Distance Under Probe	25.6"



REPAIR DEPARTMENT

Work Specialty: Horizontal and Vertical Pump Repair
 Reciprocating Pump Repair
 Steam Turbine Repair
 Gear Box Repair
 General Machine Repair
 Precision Machining
 Fabricating and Welding (All Types)

Shop Limitations: 5 Cranes - 5 Tons each
 1 Crane - 10 Tons
 Hydraulic Press - Vertical & Horizontal
 Maximum Door Width 14'0"; Height 15'6"
 For additional information see BASIC
 CAPABILITIES on front of this FACILITY LIST

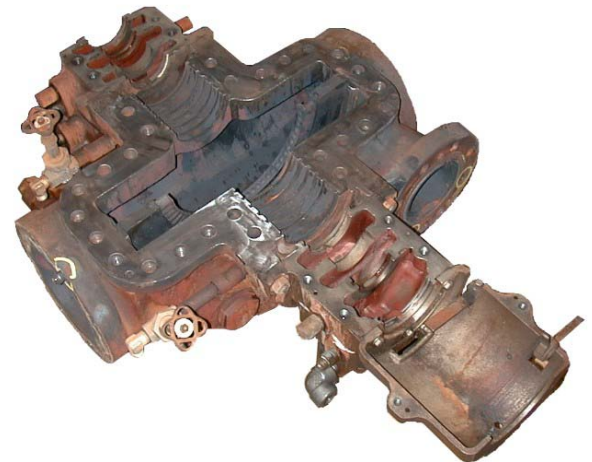


MISC. SHOP AND CONTACT INFO

HOURS AVAILABLE

Shop Hours

<u>Days</u>	<u>2ND Shift</u>
Shop Hours ...7:00 - 3:30 M-F ...	3:00 - 11:00 M-F
Office Hours	8:00 - 5:00 Monday - Friday
Emergency Hours.....	24 Hours A Day / 7 Days A Week
24 Hour Contact	409-201-5651



RATES

Weekend Rates 1 ½ Times Straight Time
 Holiday Rates..... 2 Times Straight Time
 Materials & Farm Outs Standard 15% Mark-Up
 Terms Net 30

AFTER HOURS NUMBERS

CONTACTS

HOME

CELL

Steve Ingraham	PRESIDENT.....	(409) 985-2373	(409) 626-1879
Joe Blalock	V.P / SALES	(409) 755-0612.....	(409) 201-5650
Kevin Edwards.....	SALES	(409) 755-2141.....	(409) 679-5762
Wes Lowe	IND. REPAIR SPECIALISTS		(409) 828-1810
Allen Beaver.....	SHOP COORDINATOR.....	(409) 745-2621.....	(409) 363-4091

